

Bari Sax

Central High School Concert Band Auditions

Auditions for placement in a concert band at Central High School are a big deal. Not only will the audition results determine where and in which concert group you will sit for the next year, but the results also help us determine appropriate music to program and lesson materials to use.

The audition consists on 5 parts:

1. Scales – Each major scale from the packet is tested in two octaves. Most packets have several options for how to perform your scales. Select the option that is the easiest for you. You receive credit (points) for each octave of each scale that you can perform without mistakes. Playing the scales by memory doubles the point value.
2. Chromatic Scale – You will be assigned a starting pitch and are to then play chromatically up exactly 2 octaves, and then chromatically back down to your starting pitch. There is a one half point deduction for each mistake. 10 points max score memorized, and 5 points reading
3. Etude – there are 3 levels of etude to select from. Level one is the easiest and Level three is the hardest. Select the level that best matches your abilities. If you can not consistently perform the notes, rhythm, articulations and dynamics of the piece, then you should select the next lower level. Level 3 is worth 7 more points than Level 2, but only if you can perform it well. A poorly performed Level 3 piece will return a lower score than a well performed Level 2 etc.
4. Sight-reading – You will have 60 seconds to study and silently practice an eight measure melody. 20 points maximum, one half point deduction per error (rhythmic, note, articulation, or dynamic)
5. Tone Score – Every note that you perform in the audition is evaluated as part of your tone score. Scales may be tongued or slurred, so select the option that gives you the best and most consistent sound.

Auditions take place the first two weeks of October 2015. Giving you the audition packet now allows you to practice when the time is available, and helps us insure the most accurate audition results.

Baritone Sax Scales

C  Musical notation for the C major scale, starting on middle C (C4) and ascending to C5, then descending back to C4. The scale is written in treble clef with a key signature of one flat (Bb).

F  Musical notation for the F major scale, starting on F4 and ascending to F5, then descending back to F4. The scale is written in treble clef with a key signature of one flat (Bb).

Bb  Musical notation for the Bb major scale, starting on Bb4 and ascending to Bb5, then descending back to Bb4. The scale is written in treble clef with a key signature of two flats (Bb, Eb).


Eb  Musical notation for the Eb major scale, starting on Eb4 and ascending to Eb5, then descending back to Eb4. The scale is written in treble clef with a key signature of three flats (Bb, Eb, Ab).

Ab  Musical notation for the Ab major scale, starting on Ab4 and ascending to Ab5, then descending back to Ab4. The scale is written in treble clef with a key signature of four flats (Bb, Eb, Ab, Db).

Db  Musical notation for the Db major scale, starting on Db4 and ascending to Db5, then descending back to Db4. The scale is written in treble clef with a key signature of five flats (Bb, Eb, Ab, Db, Gb).

Gb  Musical notation for the Gb major scale, starting on Gb4 and ascending to Gb5, then descending back to Gb4. The scale is written in treble clef with a key signature of six flats (Bb, Eb, Ab, Db, Gb, Cb).

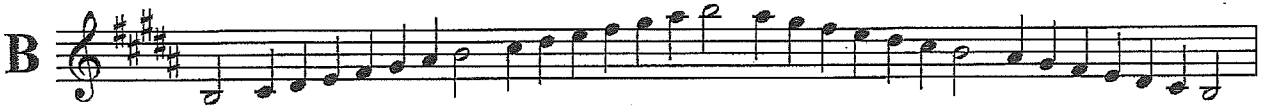
G  Musical notation for the G major scale, starting on G4 and ascending to G5, then descending back to G4. The scale is written in treble clef with a key signature of one sharp (F#).

D  Musical notation for the D major scale, starting on D4 and ascending to D5, then descending back to D4. The scale is written in treble clef with a key signature of two sharps (F#, C#).

A  Musical notation for the A major scale, starting on A4 and ascending to A5, then descending back to A4. The scale is written in treble clef with a key signature of three sharps (F#, C#, G#).

Baritone Sax Scales

2



Chromatic Scale

Play exactly 2 octaves from starting pitch



All Saxophones
Level 1

Grave

p

f

p

f

p

f

p

All Saxophones
Level 2

Scherzando

mp

Musical score for the Scherzando section, measures 78-81. The music is in 2/4 time with a key signature of one flat (Bb). It consists of four staves of music. The first staff begins with a mezzo-piano (mp) dynamic marking. The melody is characterized by eighth-note patterns and slurs.

Marcato

1-da & 2-da

82

f

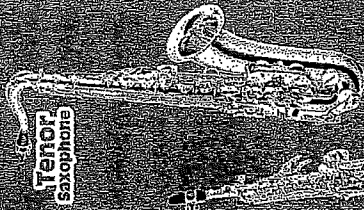
Musical score for the Marcato section, measures 82-86. The music is in 2/4 time with a key signature of one sharp (F#). It consists of five staves of music. The first staff begins with a forte (f) dynamic marking and includes the instruction "1-da & 2-da" above the notes. The music features marcato accents and slurs. A piano (p) dynamic marking appears at the end of the fifth staff.

Molto allegro. 2013

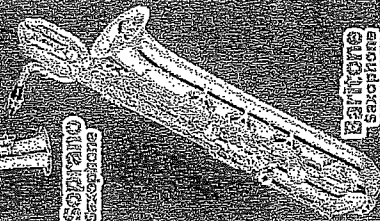
HEINZE

The image displays a handwritten musical score for a single melodic line, likely for a violin or flute, in 3/4 time. The tempo is marked "Molto allegro" and the year "2013" is written above the first staff. The composer's name, "HEINZE", is in the top right corner. The score consists of 11 staves of music. The first staff begins with a dynamic marking of *f* (forte) and a breath mark (>). The music is characterized by rapid sixteenth-note passages, often grouped with slurs. Various articulation marks, including *tr* (trills), are used throughout. The key signature changes from one sharp (F#) to two sharps (F# and C#) in the sixth staff. The notation includes many slurs, accents, and dynamic markings such as *f*, *>*, and *tr*. The piece concludes with a final cadence on the eleventh staff.

YAMAHA

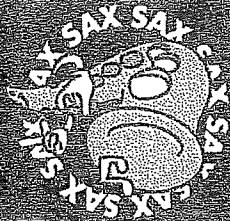


Tenor Saxophone



Soprano Saxophone

Baritone Saxophone

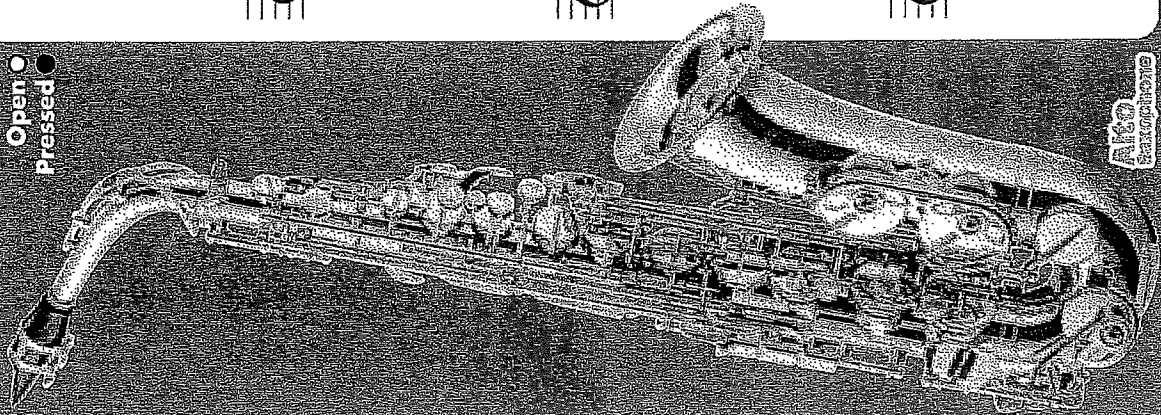


Alto Saxophone

Baritone Only

SAX FINGERINGS

Open
Pressed



Alto Saxophone

