

Horn

Central High School Concert Band Auditions

Auditions for placement in a concert band at Central High School are a big deal. Not only will the audition results determine where and in which concert group you will sit for the next year, but the results also help us determine appropriate music to program and lesson materials to use.

The audition consists on 5 parts:

1. Scales – Each major scale from the packet is tested in two octaves. Most packets have several options for how to perform your scales. Select the option that is the easiest for you. You receive credit (points) for each octave of each scale that you can perform without mistakes. Playing the scales by memory doubles the point value.
2. Chromatic Scale – You will be assigned a starting pitch and are to then play chromatically up exactly 2 octaves, and then chromatically back down to your starting pitch. There is a one half point deduction for each mistake. 10 points max score memorized, and 5 points reading
3. Etude – there are 3 levels of etude to select from. Level one is the easiest and Level three is the hardest. Select the level that best matches your abilities. If you can not consistently perform the notes, rhythm, articulations and dynamics of the piece, then you should select the next lower level. Level 3 is worth 7 more points than Level 2, but only if you can perform it well. A poorly performed Level 3 piece will return a lower score than a well performed Level 2 etc.
4. Sight-reading – You will have 60 seconds to study and silently practice an eight measure melody. 20 points maximum, one half point deduction per error (rhythmic, note, articulation, or dynamic)
5. Tone Score – Every note that you perform in the audition is evaluated as part of your tone score. Scales may be tongued or slurred, so select the option that gives you the best and most consistent sound.

Auditions take place the first two weeks of October 2015. Giving you the audition packet now allows you to practice when the time is available, and helps us insure the most accurate audition results.

F-Horn Scales

C  Musical staff for C major scale, starting on middle C (C4) and ascending to C5, then descending back to C4. The scale is written in treble clef with a key signature of one flat (Bb).

F  Musical staff for F major scale, starting on F3 and ascending to F4, then descending back to F3. The scale is written in treble clef with a key signature of two flats (Bb, Eb).

Bb ³  Musical staff for Bb major scale, starting on Bb3 and ascending to Bb4, then descending back to Bb3. The scale is written in treble clef with a key signature of three flats (Bb, Eb, Ab). A triplet of eighth notes is marked above the first three notes.

Eb  Musical staff for Eb major scale, starting on Eb3 and ascending to Eb4, then descending back to Eb3. The scale is written in treble clef with a key signature of three flats (Bb, Eb, Ab).

Ab  Musical staff for Ab major scale, starting on Ab3 and ascending to Ab4, then descending back to Ab3. The scale is written in treble clef with a key signature of four flats (Bb, Eb, Ab, Db).

Db ⁶  Musical staff for Db major scale, starting on Db3 and ascending to Db4, then descending back to Db3. The scale is written in treble clef with a key signature of four flats (Bb, Eb, Ab, Db). A triplet of eighth notes is marked above the first three notes.

Gb  Musical staff for Gb major scale, starting on Gb3 and ascending to Gb4, then descending back to Gb3. The scale is written in treble clef with a key signature of five flats (Bb, Eb, Ab, Db, Gb).

G  Musical staff for G major scale, starting on G3 and ascending to G4, then descending back to G3. The scale is written in treble clef with a key signature of one sharp (F#).

D ⁹  Musical staff for D major scale, starting on D3 and ascending to D4, then descending back to D3. The scale is written in treble clef with a key signature of two sharps (F#, C#). A triplet of eighth notes is marked above the first three notes.

A  Musical staff for A major scale, starting on A3 and ascending to A4, then descending back to A3. The scale is written in treble clef with a key signature of three sharps (F#, C#, G#).

E



A musical staff in treble clef with a key signature of three sharps (F#, C#, G#). The scale starts on E4 and ascends chromatically to E5, then descends chromatically back to E4.

B ¹²



A musical staff in treble clef with a key signature of two sharps (F#, C#). The scale starts on B4 and ascends chromatically to B5, then descends chromatically back to B4. A measure rest of 12 measures is indicated above the staff.

F#



A musical staff in treble clef with a key signature of four sharps (F#, C#, G#, D#). The scale starts on F#4 and ascends chromatically to F#5, then descends chromatically back to F#4.

Chromatic Scale

Play exactly 2 octaves from starting pitch



A musical staff in treble clef showing an ascending chromatic scale starting on E4 and ending on E5. The notes are: E4, F4, F#4, G4, G#4, A4, A#4, B4, B#4, C5, C#5, D5, D#5, E5.



A musical staff in treble clef showing a descending chromatic scale starting on E5 and ending on E4. The notes are: E5, D#5, D5, C#5, C5, B#4, B4, A#4, A4, G#4, G4, F#4, F4, E4.

F-Horn 2 Octave Scales

C  Musical staff for C major scale, starting on middle C (C4) and ascending to C5, then descending back to C4. The scale is written in treble clef with a key signature of one flat (Bb).

F  Musical staff for F major scale, starting on F3 and ascending to F4, then descending back to F3. The scale is written in treble clef with a key signature of two flats (Bb, Eb).

Bb  Musical staff for Bb major scale, starting on Bb3 and ascending to Bb4, then descending back to Bb3. The scale is written in treble clef with a key signature of three flats (Bb, Eb, Ab).

Eb  Musical staff for Eb major scale, starting on Eb3 and ascending to Eb4, then descending back to Eb3. The scale is written in treble clef with a key signature of four flats (Bb, Eb, Ab, Db).

Ab  Musical staff for Ab major scale, starting on Ab3 and ascending to Ab4, then descending back to Ab3. The scale is written in treble clef with a key signature of five flats (Bb, Eb, Ab, Db, Gb).

Db  Musical staff for Db major scale, starting on Db3 and ascending to Db4, then descending back to Db3. The scale is written in treble clef with a key signature of six flats (Bb, Eb, Ab, Db, Gb, Cb).

Gb  Musical staff for Gb major scale, starting on Gb3 and ascending to Gb4, then descending back to Gb3. The scale is written in treble clef with a key signature of seven flats (Bb, Eb, Ab, Db, Gb, Cb, Fb).

G  Musical staff for G major scale, starting on G3 and ascending to G4, then descending back to G3. The scale is written in treble clef with a key signature of one sharp (F#).

D  Musical staff for D major scale, starting on D3 and ascending to D4, then descending back to D3. The scale is written in treble clef with a key signature of two sharps (F#, C#).

A  Musical staff for A major scale, starting on A2 and ascending to A3, then descending back to A2. The scale is written in treble clef with a key signature of three sharps (F#, C#, G#).

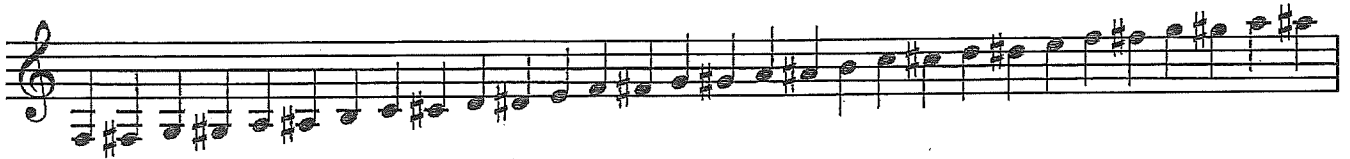
F-Horn 2 Octave Scales

2



Chromatic Scale

Play exactly 2 octaves from starting pitch



F-Horn Scales

C  Musical staff for the C scale, starting on middle C (C4) and ascending to C5. The scale is written in treble clef with a key signature of one flat (Bb).

F  Musical staff for the F scale, starting on F3 and ascending to F4. The scale is written in treble clef with a key signature of two flats (Bb, Eb).

Bb  Musical staff for the Bb scale, starting on Bb3 and ascending to Bb4. The scale is written in treble clef with a key signature of two flats (Bb, Eb).

Eb  Musical staff for the Eb scale, starting on Eb3 and ascending to Eb4. The scale is written in treble clef with a key signature of three flats (Bb, Eb, Ab).

Ab  Musical staff for the Ab scale, starting on Ab3 and ascending to Ab4. The scale is written in treble clef with a key signature of three flats (Bb, Eb, Ab).

Db  Musical staff for the Db scale, starting on Db3 and ascending to Db4. The scale is written in treble clef with a key signature of four flats (Bb, Eb, Ab, Db).

Gb  Musical staff for the Gb scale, starting on Gb3 and ascending to Gb4. The scale is written in treble clef with a key signature of four flats (Bb, Eb, Ab, Db).

G  Musical staff for the G scale, starting on G3 and ascending to G4. The scale is written in treble clef with a key signature of one sharp (F#).

D  Musical staff for the D scale, starting on D3 and ascending to D4. The scale is written in treble clef with a key signature of two sharps (F#, C#).

A  Musical staff for the A scale, starting on A2 and ascending to A3. The scale is written in treble clef with a key signature of three sharps (F#, C#, G#).

F-Horn Scales

2

E



A musical staff in treble clef with a key signature of three sharps (F#, C#, G#). The scale starts on E4 and ascends chromatically to E5, then descends chromatically back to E4.

B



A musical staff in treble clef with a key signature of three sharps (F#, C#, G#). The scale starts on B3 and ascends chromatically to B4, then descends chromatically back to B3.


F#



A musical staff in treble clef with a key signature of four sharps (F#, C#, G#, D#). The scale starts on F#3 and ascends chromatically to F#4, then descends chromatically back to F#3.

Chromatic Scale

Play exactly 2 octaves from starting pitch



A musical staff in treble clef showing an ascending chromatic scale starting on E4 and ending on E5. The key signature is three sharps (F#, C#, G#).



A musical staff in treble clef showing a descending chromatic scale starting on E5 and ending on E4. The key signature is three sharps (F#, C#, G#).

French Horn Level 1

Andante

mp

French Horn
Level 2

Andante cantabile

Musical score for French Horn, Level 2, Andante cantabile section. The score consists of five staves of music in G major (one sharp) and 3/4 time. The first staff begins with a mezzo-forte (*mf*) dynamic. The second staff includes a *cresc.* marking. The third staff features dynamics of *f*, *mf*, and *cresc.*. The fourth staff includes a *rit.* marking. The music is characterized by flowing eighth and sixteenth notes, often beamed together, with some slurs and phrasing marks.

Grandioso

Musical score for French Horn, Level 2, Grandioso section. The score consists of five staves of music in G major (one sharp) and 3/4 time. The first staff begins with a forte (*f*) dynamic and includes accents (>) over several notes. The second staff includes a piano (*p*) dynamic. The third staff includes a piano (*p*) dynamic. The fourth staff includes a piano (*p*) dynamic. The fifth staff includes a piano (*p*) dynamic. The music is characterized by rhythmic patterns, including eighth and sixteenth notes, with frequent accents and slurs.

Allegro

con fuoco

sf

sf

leggero sf

sf sf p

f p f p

19 Tempo

diminuendo pp p

tr tr

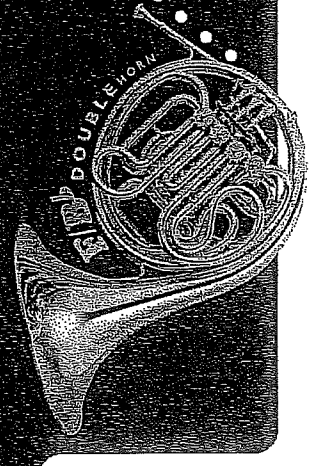
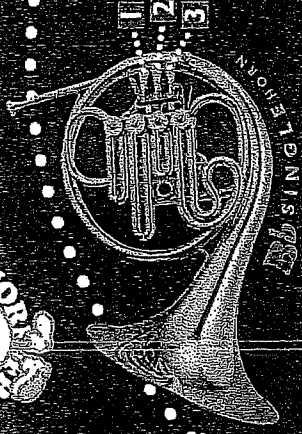
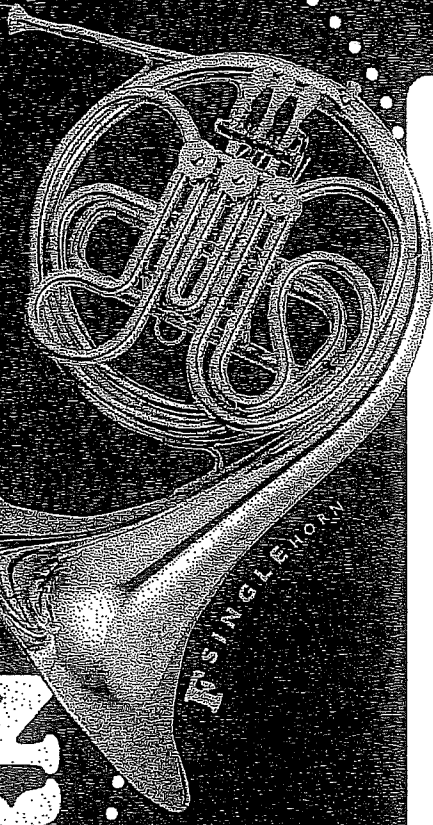
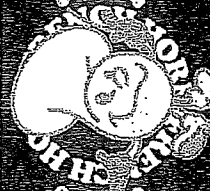
sf

p sf p pp morendo

YAMAHA

FRENCH HORN

FINGERINGS



1st SINGLE HORN

2nd SINGLE HORN

1st DOUBLE HORN

OPEN

PRESSED

1st Place for change to 2nd Horn

Diagram illustrating the fingering patterns for various notes (C, C#, D, D#, E, F, F#, G, G#, A, A#, B) on the French horn, showing the fingerings for both the 1st Single Horn and 1st Double Horn. The diagram includes musical notation for each note and the corresponding fingerings for the left and right hands.

