

Trombone & Bass Trombone

Central High School Concert Band Auditions

Auditions for placement in a concert band at Central High School are a big deal. Not only will the audition results determine where and in which concert group you will sit for the next year, but the results also help us determine appropriate music to program and lesson materials to use.

The audition consists on 5 parts:


1. Scales – Each major scale from the packet is tested in two octaves. Most packets have several options for how to perform your scales. Select the option that is the easiest for you. You receive credit (points) for each octave of each scale that you can perform without mistakes. Playing the scales by memory doubles the point value.
2. Chromatic Scale – You will be assigned a starting pitch and are to then play chromatically up exactly 2 octaves, and then chromatically back down to your starting pitch. There is a one half point deduction for each mistake. 10 points max score memorized, and 5 points reading
3. Etude – there are 3 levels of etude to select from. Level one is the easiest and Level three is the hardest. Select the level that best matches your abilities. If you can not consistently perform the notes, rhythm, articulations and dynamics of the piece, then you should select the next lower level. Level 3 is worth 7 more points than Level 2, but only if you can perform it well. A poorly performed Level 3 piece will return a lower score than a well performed Level 2 etc.
4. Sight-reading – You will have 60 seconds to study and silently practice an eight measure melody. 20 points maximum, one half point deduction per error (rhythmic, note, articulation, or dynamic)
5. Tone Score – Every note that you perform in the audition is evaluated as part of your tone score. Scales may be tongued or slurred, so select the option that gives you the best and most consistent sound.

Auditions take place the first two weeks of October 2015. Giving you the audition packet now allows you to practice when the time is available, and helps us insure the most accurate audition results.


Trombone Scales

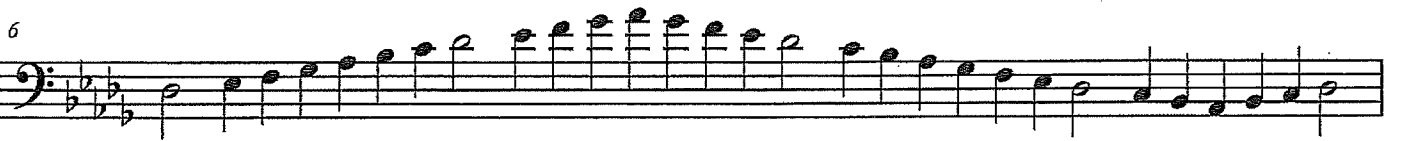
C  Musical staff for the C scale in bass clef. The scale starts on middle C (C4) and ascends to C5, then descends back to C4. The notes are: C4, D4, E4, F4, G4, A4, B4, C5, B4, A4, G4, F4, E4, D4, C4.

F  Musical staff for the F scale in bass clef. The scale starts on F3 and ascends to F4, then descends back to F3. The notes are: F3, G3, A3, B3, C4, D4, E4, F4, E4, D4, C4, B3, A3, G3, F3.

Bb ³  Musical staff for the Bb scale in bass clef. The scale starts on Bb3 and ascends to Bb4, then descends back to Bb3. The notes are: Bb3, C4, D4, Eb4, F4, G4, Ab4, Bb4, Ab4, G4, F4, Eb4, D4, C4, Bb3.

Eb ⁴  Musical staff for the Eb scale in bass clef. The scale starts on Eb3 and ascends to Eb4, then descends back to Eb3. The notes are: Eb3, F3, G3, Ab3, Bb3, C4, D4, Eb4, D4, C4, Bb3, Ab3, G3, F3, Eb3.

Ab  Musical staff for the Ab scale in bass clef. The scale starts on Ab3 and ascends to Ab4, then descends back to Ab3. The notes are: Ab3, Bb3, C4, D4, Eb4, F4, G4, Ab4, G4, F4, Eb4, D4, C4, Bb3, Ab3.

Db ⁶  Musical staff for the Db scale in bass clef. The scale starts on Db3 and ascends to Db4, then descends back to Db3. The notes are: Db3, Eb3, F3, G3, Ab3, Bb3, C4, Db4, C4, Bb3, Ab3, G3, F3, Eb3, Db3.

Gb  Musical staff for the Gb scale in bass clef. The scale starts on Gb3 and ascends to Gb4, then descends back to Gb3. The notes are: Gb3, Ab3, Bb3, C4, Db4, Eb4, F4, Gb4, F4, Eb4, Db4, C4, Bb3, Ab3, Gb3.

G  Musical staff for the G scale in bass clef. The scale starts on G3 and ascends to G4, then descends back to G3. The notes are: G3, A3, B3, C4, D4, E4, F4, G4, F4, E4, D4, C4, B3, A3, G3.

D ⁹  Musical staff for the D scale in bass clef. The scale starts on D3 and ascends to D4, then descends back to D3. The notes are: D3, E3, F3, G3, A3, B3, C4, D4, C4, B3, A3, G3, F3, E3, D3.

A  Musical staff for the A scale in bass clef. The scale starts on A2 and ascends to A3, then descends back to A2. The notes are: A2, B2, C3, D3, E3, F3, G3, A3, G3, F3, E3, D3, C3, B2, A2.

Trombone Scales

2

E

¹²
B

F#

Chromatic Scale

Play exactly 2 octaves from starting pitch

Trombone 2 Octave Scales

C

F

Bb

Eb

Ab

Db

Gb

G

D

A

Bb Clarinet Scales

2

E



B


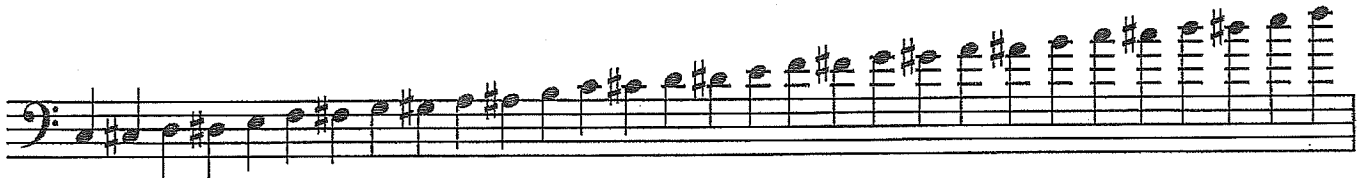


F#



Chromatic Scale

Play exactly 2 octaves from starting pitch



Bass Trombone 2 Octave Scales

C 

F 

Bb 

Eb 

Ab 

Db 

Gb 

G 

D 

A 

Bass Trombone Scales

2

E

B

F#

Chromatic Scale


Play exactly 2 octaves from starting pitch


Trombone Scales

C  Musical staff for the C scale in bass clef. The scale starts on middle C (C4) and ascends to C5, then descends back to C4. The notes are: C4, D4, E4, F4, G4, A4, B4, C5, B4, A4, G4, F4, E4, D4, C4.

F  Musical staff for the F scale in bass clef. The scale starts on F3 and ascends to F4, then descends back to F3. The notes are: F3, G3, A3, Bb3, C4, D4, E4, F4, E4, D4, C4, Bb3, A3, G3, F3.

Bb  Musical staff for the Bb scale in bass clef. The scale starts on Bb3 and ascends to Bb4, then descends back to Bb3. The notes are: Bb3, C4, D4, Eb4, F4, G4, Ab4, Bb4, Ab4, G4, F4, Eb4, D4, C4, Bb3.

Eb  Musical staff for the Eb scale in bass clef. The scale starts on Eb3 and ascends to Eb4, then descends back to Eb3. The notes are: Eb3, F3, G3, Ab3, Bb3, C4, D4, Eb4, D4, C4, Bb3, Ab3, G3, F3, Eb3.

Ab  Musical staff for the Ab scale in bass clef. The scale starts on Ab3 and ascends to Ab4, then descends back to Ab3. The notes are: Ab3, Bb3, C4, D4, Eb4, F4, G4, Ab4, G4, F4, Eb4, D4, C4, Bb3, Ab3.

Db  Musical staff for the Db scale in bass clef. The scale starts on Db3 and ascends to Db4, then descends back to Db3. The notes are: Db3, Eb3, F3, G3, Ab3, Bb3, C4, Db4, C4, Bb3, Ab3, G3, F3, Eb3, Db3.

Gb  Musical staff for the Gb scale in bass clef. The scale starts on Gb3 and ascends to Gb4, then descends back to Gb3. The notes are: Gb3, Ab3, Bb3, C4, Db4, Eb4, F4, Gb4, F4, Eb4, Db4, C4, Bb3, Ab3, Gb3.

G  Musical staff for the G scale in bass clef. The scale starts on G3 and ascends to G4, then descends back to G3. The notes are: G3, A3, B3, C4, D4, E4, F#4, G4, F#4, E4, D4, C4, B3, A3, G3.

D  Musical staff for the D scale in bass clef. The scale starts on D3 and ascends to D4, then descends back to D3. The notes are: D3, E3, F#3, G3, A3, B3, C#4, D4, C#4, B3, A3, G3, F#3, E3, D3.

A  Musical staff for the A scale in bass clef. The scale starts on A2 and ascends to A3, then descends back to A2. The notes are: A2, B2, C#3, D3, E3, F#3, G#3, A3, G#3, F#3, E3, D3, C#3, B2, A2.

Trombone Scales

2

E



A musical staff in bass clef with a key signature of three sharps (F#, C#, G#). The scale starts on E2 and ascends chromatically to E4, then descends chromatically back to E2.

B



A musical staff in bass clef with a key signature of three sharps (F#, C#, G#). The scale starts on B1 and ascends chromatically to B3, then descends chromatically back to B1.

F#



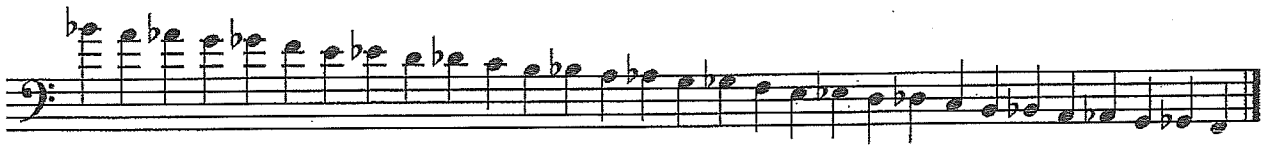
A musical staff in bass clef with a key signature of four sharps (F#, C#, G#, D#). The scale starts on F#1 and ascends chromatically to F#3, then descends chromatically back to F#1.

Chromatic Scale

Play exactly 2 octaves from starting pitch



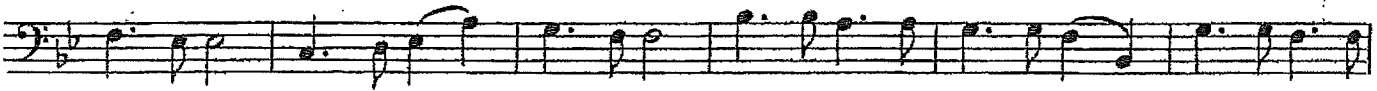
A musical staff in bass clef showing an ascending chromatic scale starting on C2 and ending on C4. The notes are: C2, C#2, D2, D#2, E2, E#2, F2, F#2, G2, G#2, A2, A#2, B2, B#2, C3, C#3, D3, D#3, E3, E#3, F3, F#3, G3, G#3, A3, A#3, B3, B#3, C4.



A musical staff in bass clef showing a descending chromatic scale starting on C4 and ending on C2. The notes are: C4, B#3, B3, A#3, A3, G#3, G3, F#3, F3, E#3, E3, D#3, D3, C#3, C3, B#2, B2, A#2, A2, G#2, G2, F#2, F2, E#2, E2, D#2, D2, C#2, C2.

**Trombone
Level 1**

Andante



Trombone Level 2

Andante

Musical score for Trombone Level 2, Andante section. The score consists of five staves of music in bass clef, 2/4 time signature, and B-flat major key signature. The first staff begins with a *mf* dynamic marking. The second staff continues the melody. The third staff features a *f* dynamic marking. The fourth staff returns to *mf*. The fifth staff starts with *f* and ends with *mf*. A 4-measure rest with a first ending bracket is indicated above the third staff.

60

Allegro

Musical score for Trombone Level 2, Allegro section. The score consists of four staves of music in bass clef, 2/4 time signature, and B-flat major key signature. The music is characterized by a fast, rhythmic eighth-note pattern. The first staff begins with a *f* dynamic marking. The second and third staves continue the rhythmic pattern. The fourth staff concludes the section with a *mf* dynamic marking.

Allegro (♩ = 96)

No. 5

p

6

11

f *cresc.*

16

p

21

26

tr *cresc.*

30

tr *f* *rall.* *dolcissimo* *p* *a tempo*

35

p

40

45

p

50

54

p *f*

Moderato $\text{♩} = 144$

2013 Buston.

Handwritten musical score for bass clef, 3/2 time, key of B-flat major. The score consists of 11 staves of music. The notation includes various fingering and articulation markings:

- Staff 1: (6) V
- Staff 2: V V 6 V V V
- Staff 3: V V V
- Staff 4: V 6 V V V V
- Staff 5: (V) 6 V V V
- Staff 6: V 6 V
- Staff 7: (6) V
- Staff 8: V 6 V
- Staff 9: V (6) (V) V V V 6 V
- Staff 10: V (6) (V) V 6 6 6 V 6

TROMBONE

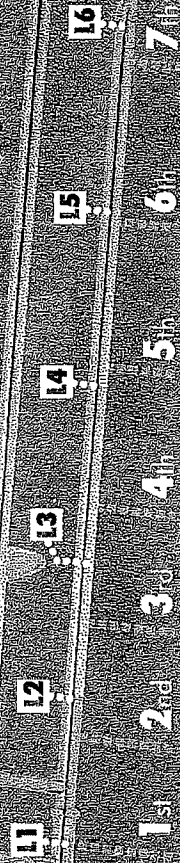
POSITIONS



TROMBONE

TENOR
BASS TROMBONE

L Using F-attachment lever



B \flat **F**

A \flat -B \flat	B	C	C \flat -D \flat	D	D \flat -E \flat	E	F	F \flat -G \flat	G	A
1	2	3	4	5	6	7	1	2	3	4

This note is only playable on a 2 valve bass trombone

B \flat **F**

A \flat -B \flat	B	C	C \flat -D \flat	D	D \flat -E \flat	E	F	F \flat -G \flat	G	A
1	2	3	4	5	6	7	1 or 6	2	3	4

B \flat **F**

A \flat -B \flat	B	C	C \flat -D \flat	D	D \flat -E \flat	E	F	F \flat -G \flat	G	A
1	2	3	4	5	6	7	1 or 4	2	3	4

May need slightly shorter slide position.

