

Tuba

Central High School Concert Band Auditions

Auditions for placement in a concert band at Central High School are a big deal. Not only will the audition results determine where and in which concert group you will sit for the next year, but the results also help us determine appropriate music to program and lesson materials to use.

The audition consists on 5 parts:

1. Scales - Each major scale from the packet is tested in two octaves. Most packets have several options for how to perform your scales. Select the option that is the easiest for you. You receive credit (points) for each octave of each scale that you can perform without mistakes. Playing the scales by memory doubles the point value.
2. Chromatic Scale - You will be assigned a starting pitch and are to then play chromatically up exactly 2 octaves, and then chromatically back down to your starting pitch. There is a one half point deduction for each mistake. 10 points max score memorized, and 5 points reading
3. Etude - there are 3 levels of etude to select from. Level one is the easiest and Level three is the hardest. Select the level that best matches your abilities. If you can not consistently perform the notes, rhythm, articulations and dynamics of the piece, then you should select the next lower level. Level 3 is worth 7 more points than Level 2, but only if you can perform it well. A poorly performed Level 3 piece will return a lower score than a well performed Level 2 etc.
4. Sight-reading - You will have 60 seconds to study and silently practice an eight measure melody. 20 points maximum, one half point deduction per error (rhythmic, note, articulation, or dynamic)
5. Tone Score - Every note that you perform in the audition is evaluated as part of your tone score. Scales may be tongued or slurred, so select the option that gives you the best and most consistent sound.

Auditions take place the first two weeks of October 2015. Giving you the audition packet now allows you to practice when the time is available, and helps us insure the most accurate audition results.

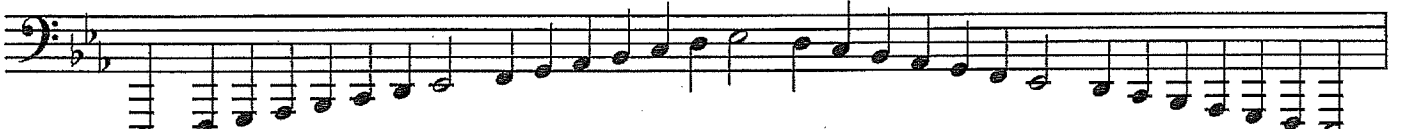
Tuba Scales

C  Musical staff for C major scale in bass clef. The scale consists of 12 notes: C, D, E, F, G, A, B, A, G, F, E, D, C.

F  Musical staff for F major scale in bass clef. The scale consists of 12 notes: F, G, A, Bb, C, D, E, D, C, Bb, A, G, F.

3

Bb  Musical staff for Bb major scale in bass clef. The scale consists of 12 notes: Bb, C, D, Eb, F, G, Ab, G, F, Eb, D, C, Bb.

Eb  Musical staff for Eb major scale in bass clef. The scale consists of 12 notes: Eb, F, G, Ab, Bb, C, D, C, Bb, Ab, G, F, Eb.

Ab  Musical staff for Ab major scale in bass clef. The scale consists of 12 notes: Ab, Bb, C, Db, Eb, F, G, F, Eb, Db, C, Bb, Ab.

6

Db  Musical staff for Db major scale in bass clef. The scale consists of 12 notes: Db, Eb, F, Gb, Ab, Bb, C, Bb, Ab, Gb, F, Eb, Db.

Gb  Musical staff for Gb major scale in bass clef. The scale consists of 12 notes: Gb, Ab, Bb, C, Db, Eb, F, Eb, Db, C, Bb, Ab, Gb.

G  Musical staff for G major scale in bass clef. The scale consists of 12 notes: G, A, B, C, D, E, F#, E, D, C, B, A, G.

9

D  Musical staff for D major scale in bass clef. The scale consists of 12 notes: D, E, F#, G, A, B, C#, B, A, G, F#, E, D.

A  Musical staff for A major scale in bass clef. The scale consists of 12 notes: A, B, C#, D, E, F#, G#, F#, E, D, C#, B, A.

Tuba Scales

2

E

B ¹²

F#

Chromatic Scale

Play exactly 2 octaves from starting pitch

Tuba Scales

C  Musical staff for C major scale in bass clef. The scale consists of 12 notes: C, D, E, F, G, A, B, A, G, F, E, D, C.

F  Musical staff for F major scale in bass clef. The scale consists of 12 notes: F, G, A, Bb, C, D, E, D, C, Bb, A, G, F.

Bb  Musical staff for Bb major scale in bass clef. The scale consists of 12 notes: Bb, C, D, E, F, G, A, G, F, E, D, C, Bb.

Eb  Musical staff for Eb major scale in bass clef. The scale consists of 12 notes: Eb, F, G, Ab, Bb, C, D, C, Bb, Ab, G, F, Eb.

Ab  Musical staff for Ab major scale in bass clef. The scale consists of 12 notes: Ab, Bb, C, D, Eb, F, G, F, Eb, D, C, Bb, Ab.

Db  Musical staff for Db major scale in bass clef. The scale consists of 12 notes: Db, Eb, F, G, Ab, Bb, C, Bb, Ab, G, F, Eb, Db.

Gb  Musical staff for Gb major scale in bass clef. The scale consists of 12 notes: Gb, Ab, Bb, C, Db, Eb, F, Eb, Db, C, Bb, Ab, Gb.

G  Musical staff for G major scale in bass clef. The scale consists of 12 notes: G, A, B, C, D, E, F#, E, D, C, B, A, G.

D  Musical staff for D major scale in bass clef. The scale consists of 12 notes: D, E, F#, G, A, B, C#, B, A, G, F#, E, D.

A  Musical staff for A major scale in bass clef. The scale consists of 12 notes: A, B, C#, D, E, F#, G#, F#, E, D, C#, B, A.

Tuba Scales

2

E

B

F#

Chromatic Scale

Play exactly 2 octaves from starting pitch

**Tuba
Level 1**

*Andante
legato*

First musical staff in bass clef with two flats. It begins with a *mf* dynamic marking and contains a sequence of notes: G2, A2, B2, C3, D3, E3, F3, G3, A3, B3, C4, D4, E4, F4, G4, A4, B4, C5. The notes are mostly quarter notes with some dotted rhythms.

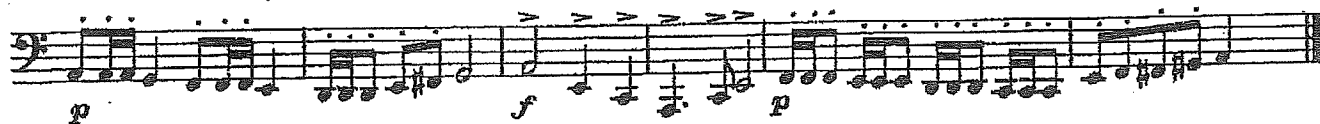
Second musical staff in bass clef with two flats. It starts with a *f* dynamic marking, followed by a *mf* marking. The notes are: G2, A2, B2, C3, D3, E3, F3, G3, A3, B3, C4, D4, E4, F4, G4, A4, B4, C5. It includes some slurs and rests.

Third musical staff in bass clef with two flats. It begins with a *f* dynamic marking, followed by a *mf* marking. The notes are: G2, A2, B2, C3, D3, E3, F3, G3, A3, B3, C4, D4, E4, F4, G4, A4, B4, C5. It features slurs and rests.

Tuba
Level 2



Grandioso



Allegretto

mf

Cantabile

p

mf

p

cresc.

mf

f



YAMAHA

EUPHONIUM & TUBA

OPEN T PRESSED



PHONIUM & TUBA
Fingerings



BB
TUBA



ROTARY
TUBA



EUPHONIUM

EUPHONIUM TUBA
TUBA
EUPHONIUM

4 PISTONS

3 PISTONS

Notes: B, C, C#-D, D, D#-E, E, F, F#-G, G, G#-A, A, A#-B

EUPHONIUM TUBA
TUBA
EUPHONIUM

3 PISTONS

Notes: B, C, C#-D, D, D#-E, E, F, F#-G, G, G#-A, A, A#-B

EUPHONIUM TUBA
TUBA
EUPHONIUM

3 PISTONS

Notes: B, C, C#-D, D, D#-E, E, F, F#-G, G, G#-A, A, A#-B

