

Central High School Concert Band Auditions

Auditions for placement in a concert band at Central High School are an important facet of our program. This is your chance to show us “what you’ve got”! Not only will the audition results determine where and in which concert group you will sit for the next year, but the results also help us determine appropriate music to program and lesson materials that will be most beneficial to YOU.

The audition consists on 5 parts:

1. Scales – Each major scale from the packet is tested in two octaves. Most packets have several options for how to perform your scales. Select the option that is the easiest for you. You receive credit (points) for each octave of each scale that you can perform without mistakes. Playing the scales by memory doubles the point value.

2. Chromatic Scale – You will be assigned a starting pitch and are to then play chromatically up exactly 2 octaves, and then chromatically back down to your starting pitch. There is a one half point deduction for each mistake. 10 points max score memorized, and 5 points reading

3. Etude – there are 3 levels of etude to select from. Level one is the easiest and Level three is the hardest. Select the level that best matches your abilities. If you can not consistently perform the notes, rhythm, articulations and dynamics of the piece, then you should select the next lower level. Level 3 is worth 7 more points than Level 2, but only if you can perform it well. A poorly performed Level 3 piece will return a lower score than a well performed Level 2 etc.

4. Sight-reading – You will have 60 seconds to study and silently practice an eight measure melody. 20 points maximum, one half point deduction per error (rhythmic, note, articulation, or dynamic)

5. Tone Score – Every note that you perform in the audition is evaluated as part of your tone score. Scales may be tongued or slurred, so select the option that gives you the best and most consistent sound.

Auditions will take place the last two weeks of April 2019. Incoming freshmen will have their auditions scheduled for the beginning of May. Giving you the audition packet now allows you to practice when the time is available, allows you to be the most successful you, and helps us insure the most accurate audition results.

Oboe Scales

C  Musical staff for C major scale. The scale is written in treble clef with a key signature of one flat (Bb). The notes are: C4, D4, E4, F4, G4, A4, Bb4, C5, Bb4, A4, G4, F4, E4, D4, C4.

F  Musical staff for F major scale. The scale is written in treble clef with a key signature of two flats (Bb, Eb). The notes are: F4, G4, A4, Bb4, C5, Bb4, A4, G4, F4, E4, D4, C4, Bb4, A4, G4, F4.

Bb  Musical staff for Bb major scale. The scale is written in treble clef with a key signature of two flats (Bb, Eb). The notes are: Bb4, C5, D5, Eb5, F5, G5, Ab5, Bb5, Ab5, G5, F5, Eb5, D5, C5, Bb4.

Eb  Musical staff for Eb major scale. The scale is written in treble clef with a key signature of three flats (Bb, Eb, Ab). The notes are: Eb4, F4, G4, Ab4, Bb4, C5, Bb4, Ab4, G4, F4, Eb4, D4, C4, Bb4, Ab4, Eb4.

Ab  Musical staff for Ab major scale. The scale is written in treble clef with a key signature of four flats (Bb, Eb, Ab, Db). The notes are: Ab4, Bb4, C5, Bb4, Ab4, G4, F4, Eb4, D4, C4, Bb4, Ab4, G4, F4, Eb4, Ab4.

Db  Musical staff for Db major scale. The scale is written in treble clef with a key signature of five flats (Bb, Eb, Ab, Db, Gb). The notes are: Db4, Eb4, F4, G4, Ab4, Bb4, C5, Bb4, Ab4, G4, F4, Eb4, Db4, C4, Bb4, Db4.

Gb  Musical staff for Gb major scale. The scale is written in treble clef with a key signature of six flats (Bb, Eb, Ab, Db, Gb, Cb). The notes are: Gb4, Ab4, Bb4, C5, Bb4, Ab4, Gb4, F4, Eb4, Db4, Cb4, Bb4, Ab4, Gb4, F4, Eb4.

G  Musical staff for G major scale. The scale is written in treble clef with a key signature of one sharp (F#). The notes are: G4, A4, B4, C5, B4, A4, G4, F#4, E4, D4, C4, B3, A3, G4.

D  Musical staff for D major scale. The scale is written in treble clef with a key signature of two sharps (F#, C#). The notes are: D4, E4, F#4, G4, A4, B4, C#5, B4, A4, G4, F#4, E4, D4, C#4, B4, D4.

A  Musical staff for A major scale. The scale is written in treble clef with a key signature of three sharps (F#, C#, G#). The notes are: A4, B4, C#5, B4, A4, G#4, F#4, E4, D4, C#4, B4, A4, G#4, F#4, E4, A4.

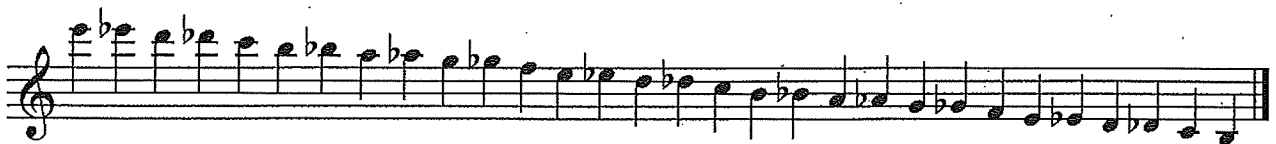
Oboe Scales

2



Chromatic Scale

Play exactly 2 octaves from starting pitch



Oboe
Level 1

Lento cantabile

The first section of the music is written on two staves. The first staff begins with a treble clef, a key signature of one sharp (F#), and a 4/4 time signature. The tempo/mood is 'Lento cantabile'. The melody consists of a series of eighth and quarter notes, with some slurs and ties. The second staff continues the melody with similar rhythmic values and phrasing.

11

Allegro moderato

The second section of the music is written on two staves. The first staff begins with a treble clef, a key signature of one flat (Bb), and a 2/4 time signature. The tempo/mood is 'Allegro moderato'. The melody is more rhythmic, featuring eighth and sixteenth notes. The second staff continues the melody. The word 'Fine' is written at the end of the first staff, and 'D.C.' is written at the end of the second staff.

D.C.

Oboe
Level 2

Andante

Musical score for Oboe, Level 2, Andante section. The score consists of five staves of music in 4/4 time. The key signature has one sharp (F#). The tempo is marked "Andante". The music features a melodic line with various intervals and rests. The word "fina" is written below the third staff, and "D.S." is written below the fifth staff.

Allegro moderato

Musical score for Oboe, Level 2, Allegro moderato section. The score consists of four staves of music in 2/4 time. The key signature has two flats (Bb, Eb). The tempo is marked "Allegro moderato". The music features a more rhythmic and melodic line with various intervals and rests.

G MAJOR

Andantino mosso $\text{♩} = 84$

7. *mf* pleasing, moving ahead always

5

10

15 *p* *mp*

20

25 *mf*

30

35

40 *acc.*

45 *p*

a tempo

50 *rall.* *mf*

55

60

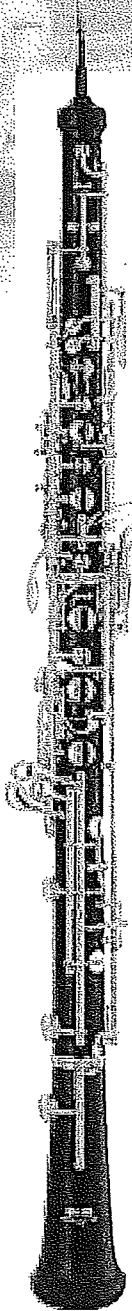
65 *p*

70 *pp*

Advantage

Fingerings

Compiled by Nancy Clauter
 Professor of Oboe
 University of Kentucky



Open ○
 Pressed ●
 Half Hole ◐
 1st Octave Key (on back) ⤴

	A#	Bb	B	C	C#	Db

D	D#	Eb	E	Forked F	Chromatic F	F#	Gb

G	G#	Ab	A	A#	Bb	B	C

The following products are recommended for complete care of your instrument:

Cleaning gauze · Oboe swab · Pad cleaning paper · Polishing cloth · Tone hole cleaner

C# D# D D# Eb E Forked F Chromatic F

This section shows the first six notes of the oboe scale. Each note is represented by a musical staff with a treble clef and a fingering diagram below it. The notes are: C# (finger 1), D (finger 1), D# (finger 1), Eb (finger 1), E (finger 1), and Forked F (finger 1) and Chromatic F (finger 1).

F# G# G G# Ab A A# Bb

This section shows the next six notes of the oboe scale. Each note is represented by a musical staff with a treble clef and a fingering diagram below it. The notes are: F# (finger 1), G (finger 1), G# (finger 1), Ab (finger 1), A (finger 1), and A# (finger 1) and Bb (finger 1).

B C C# D# D D# Eb

This section shows the final six notes of the oboe scale. Each note is represented by a musical staff with a treble clef and a fingering diagram below it. The notes are: B (finger 1), C (finger 1), C# (finger 1), D (finger 1), D# (finger 1), and D# (finger 1) and Eb (finger 1). The fingering diagram for D# includes the text "Optional for pitch".