

Central High School Concert Band Auditions

Auditions for placement in a concert band at Central High School are an important facet of our program. This is your chance to show us “what you’ve got”! Not only will the audition results determine where and in which concert group you will sit for the next year, but the results also help us determine appropriate music to program and lesson materials that will be most beneficial to YOU.

The audition consists on 5 parts:

1 . Scales – Each major scale from the packet is tested in two octaves. Most packets have several options for how to perform your scales. Select the option that is the easiest for you. You receive credit (points) for each octave of each scale that you can perform without mistakes. Playing the scales by memory doubles the point value.

2. Chromatic Scale – You will be assigned a starting pitch and are to then play chromatically up exactly 2 octaves, and then chromatically back down to your starting pitch. There is a one half point deduction for each mistake. 10 points max score memorized, and 5 points reading

3. Etude – there are 3 levels of etude to select from. Level one is the easiest and Level three is the hardest. Select the level that best matches your abilities. If you can not consistently perform the notes, rhythm, articulations and dynamics of the piece, then you should select the next lower level. Level 3 is worth 7 more points than Level 2, but only if you can perform it well. A poorly performed Level 3 piece will return a lower score than a well performed Level 2 etc.


4. Sight-reading – You will have 60 seconds to study and silently practice an eight measure melody. 20 points maximum, one half point deduction per error (rhythmic, note, articulation, or dynamic)

5. Tone Score – Every note that you perform in the audition is evaluated as part of your tone score. Scales may be tongued or slurred, so select the option that gives you the best and most consistent sound.


Auditions will take place the last two weeks of April 2019. Incoming freshmen will have their auditions scheduled for the beginning of May. Giving you the audition packet now allows you to practice when the time is available, allows you to be the most successful you, and helps us insure the most accurate audition results.

Trombone Scales

C  Musical staff for C major scale in bass clef. The scale consists of 12 notes: C, D, E, F, G, A, B, A, G, F, E, D, C.

F  Musical staff for F major scale in bass clef. The scale consists of 12 notes: F, G, A, Bb, C, D, E, D, C, Bb, A, G, F.

Bb ³  Musical staff for Bb major scale in bass clef. The scale consists of 12 notes: Bb, C, D, Eb, F, G, A, G, F, Eb, D, C, Bb. A triplet of eighth notes is indicated above the first six notes.

Eb ⁴  Musical staff for Eb major scale in bass clef. The scale consists of 12 notes: Eb, F, G, Ab, Bb, C, D, C, Bb, Ab, G, F, Eb. A group of four eighth notes is indicated above the first six notes.


Ab  Musical staff for Ab major scale in bass clef. The scale consists of 12 notes: Ab, Bb, C, Db, Eb, F, G, F, Eb, Db, C, Bb, Ab.

Db ⁶  Musical staff for Db major scale in bass clef. The scale consists of 12 notes: Db, Eb, F, Gb, Ab, Bb, C, Bb, Ab, Gb, F, Eb, Db. A group of six eighth notes is indicated above the first six notes.

Gb  Musical staff for Gb major scale in bass clef. The scale consists of 12 notes: Gb, Ab, Bb, Cb, Db, Eb, F, Eb, Db, Cb, Bb, Ab, Gb.

G  Musical staff for G major scale in bass clef. The scale consists of 12 notes: G, A, B, C, D, E, F#, E, D, C, B, A, G.

D ⁹  Musical staff for D major scale in bass clef. The scale consists of 12 notes: D, E, F#, G, A, B, C#, B, A, G, F#, E, D. A group of nine eighth notes is indicated above the first six notes.

A  Musical staff for A major scale in bass clef. The scale consists of 12 notes: A, B, C, D, E, F#, G#, F#, E, D, C, B, A.

Trombone Scales

2

E

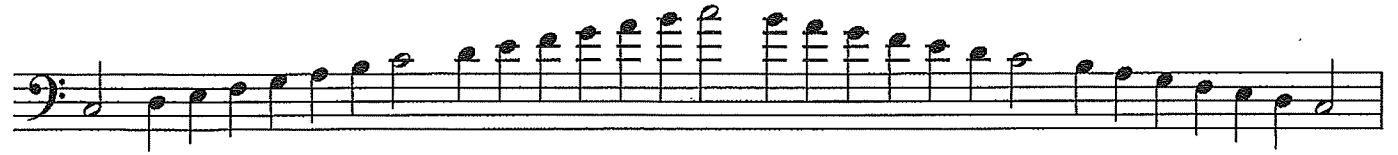
B ¹²


F#

Chromatic Scale

Play exactly 2 octaves from starting pitch

Trombone 2 Octave Scales

C  Musical staff for C major scale in bass clef. The scale consists of 12 notes: C, D, E, F, G, A, B, C, B, A, G, F, E, D, C. The notes are written as quarter notes, with a fermata over the final C.

F  Musical staff for F major scale in bass clef. The scale consists of 12 notes: F, G, A, Bb, C, D, E, F, E, D, C, Bb, A, G, F. The notes are written as quarter notes, with a fermata over the final F.

Bb  Musical staff for Bb major scale in bass clef. The scale consists of 12 notes: Bb, C, D, Eb, F, G, A, Bb, A, G, F, Eb, D, C, Bb. The notes are written as quarter notes, with a fermata over the final Bb.

Eb  Musical staff for Eb major scale in bass clef. The scale consists of 12 notes: Eb, F, G, Ab, Bb, C, D, Eb, D, C, Bb, Ab, G, F, Eb. The notes are written as quarter notes, with a fermata over the final Eb.

Ab  Musical staff for Ab major scale in bass clef. The scale consists of 12 notes: Ab, Bb, C, Db, Eb, F, G, Ab, G, F, Eb, Db, C, Bb, Ab. The notes are written as quarter notes, with a fermata over the final Ab.

Db  Musical staff for Db major scale in bass clef. The scale consists of 12 notes: Db, Eb, F, Gb, Ab, Bb, C, Db, C, Bb, Ab, Gb, F, Eb, Db. The notes are written as quarter notes, with a fermata over the final Db.

Gb  Musical staff for Gb major scale in bass clef. The scale consists of 12 notes: Gb, Ab, Bb, C, Db, Eb, F, Gb, F, Eb, C, Bb, Ab, Gb. The notes are written as quarter notes, with a fermata over the final Gb.

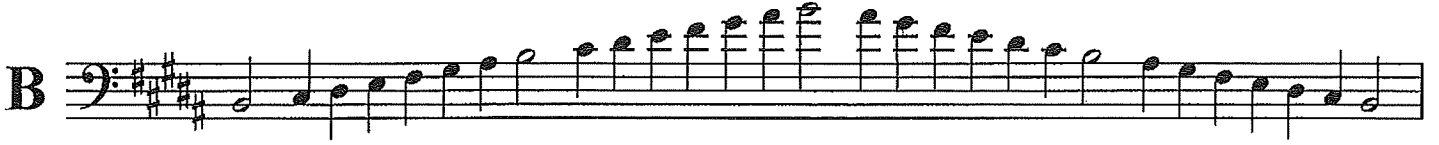
G  Musical staff for G major scale in bass clef. The scale consists of 12 notes: G, A, B, C, D, E, F#, G, F#, E, D, C, B, A, G. The notes are written as quarter notes, with a fermata over the final G.

D  Musical staff for D major scale in bass clef. The scale consists of 12 notes: D, E, F#, G, A, B, C#, D, C#, B, A, G, F#, E, D. The notes are written as quarter notes, with a fermata over the final D.

A  Musical staff for A major scale in bass clef. The scale consists of 12 notes: A, B, C#, D, E, F#, G#, A, G#, F#, E, D, C#, B, A. The notes are written as quarter notes, with a fermata over the final A.

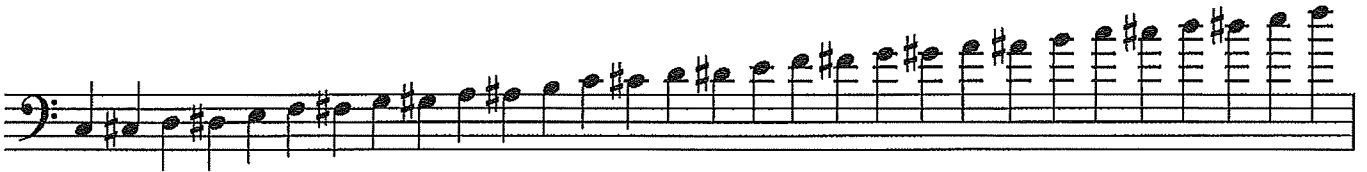
Bb Clarinet Scales

2



Chromatic Scale

Play exactly 2 octaves from starting pitch



Bass Trombone 2 Octave Scales


C  Musical staff for C major scale in bass clef. The scale consists of 12 notes: C, D, E, F, G, A, B, A, G, F, E, D, C. The notes are written as quarter notes, with a half note for the final C.

F  Musical staff for F major scale in bass clef. The scale consists of 12 notes: F, G, A, Bb, C, D, E, D, C, Bb, A, G, F. The notes are written as quarter notes, with a half note for the final F.

Bb  Musical staff for Bb major scale in bass clef. The scale consists of 12 notes: Bb, C, D, E, F, G, A, G, F, E, D, C, Bb. The notes are written as quarter notes, with a half note for the final Bb.

Eb  Musical staff for Eb major scale in bass clef. The scale consists of 12 notes: Eb, F, G, Ab, Bb, C, D, C, Bb, Ab, G, F, Eb. The notes are written as quarter notes, with a half note for the final Eb.

Ab  Musical staff for Ab major scale in bass clef. The scale consists of 12 notes: Ab, Bb, C, D, Eb, F, G, F, Eb, D, C, Bb, Ab. The notes are written as quarter notes, with a half note for the final Ab.

Db  Musical staff for Db major scale in bass clef. The scale consists of 12 notes: Db, Eb, F, G, Ab, Bb, C, Bb, Ab, G, F, Eb, Db. The notes are written as quarter notes, with a half note for the final Db.

Gb  Musical staff for Gb major scale in bass clef. The scale consists of 12 notes: Gb, Ab, Bb, C, Db, Eb, F, Eb, Db, C, Bb, Ab, Gb. The notes are written as quarter notes, with a half note for the final Gb.

G  Musical staff for G major scale in bass clef. The scale consists of 12 notes: G, A, B, C, D, E, F#, E, D, C, B, A, G. The notes are written as quarter notes, with a half note for the final G.

D  Musical staff for D major scale in bass clef. The scale consists of 12 notes: D, E, F#, G, A, B, C#, B, A, G, F#, E, D. The notes are written as quarter notes, with a half note for the final D.

A  Musical staff for A major scale in bass clef. The scale consists of 12 notes: A, B, C#, D, E, F#, G#, F#, E, D, C#, B, A. The notes are written as quarter notes, with a half note for the final A.

Bass Trombone Scales

2



Chromatic Scale

Play exactly 2 octaves from starting pitch



16



Trombone Scales

C

F

Bb

Eb

Ab

Db

Gb

G

D

A

Trombone Scales

2

E

B

F#

Chromatic Scale

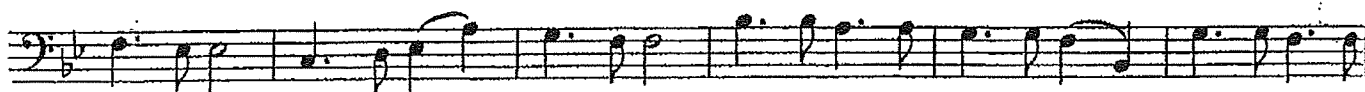
Play exactly 2 octaves from starting pitch

Ascending Chromatic Scale

Descending Chromatic Scale

Trombone Level 1

Andante



Trombone Level 2

Andante

Musical score for Trombone Level 2, Andante section. The score consists of five staves of music in bass clef, 2/4 time signature, and B-flat major key. The tempo is marked "Andante". The dynamics are marked *mf* (mezzo-forte) and *f* (forte). The first staff begins with a *mf* dynamic. The second staff continues the melody. The third staff features a *f* dynamic. The fourth staff returns to *mf*. The fifth staff concludes with a *f* dynamic followed by a *mf* dynamic. A 4/2 time signature change is indicated above the final measure of the first staff.

60

Allegro

Musical score for Trombone Level 2, Allegro section. The score consists of four staves of music in bass clef, 2/4 time signature, and B-flat major key. The tempo is marked "Allegro". The music is characterized by rapid sixteenth-note passages. The first staff begins with a *f* dynamic. The second staff continues the rapid sixteenth-note pattern. The third staff continues the pattern. The fourth staff concludes with a *f* dynamic.

T. Bone 2014
16-17

Andante pastorale (♩ = 46)

No. 10

p con esp.

dolce

f p f

p f p

f p

dolce

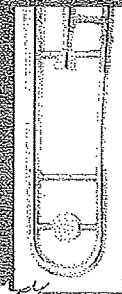
f p

dolce f

p cresc.

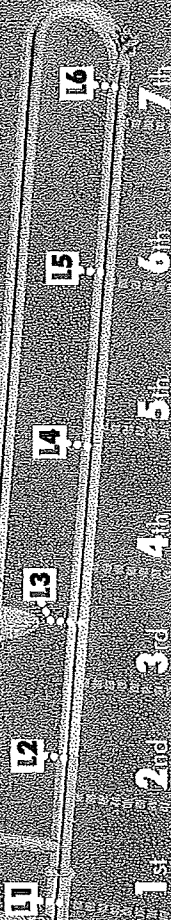
T R O M B O N E

SLIDE POSITIONS



TENOR
TROMBONE

BASS
TROMBONE



1 Using F-attachment lever

Diagram 1: Tenor Trombone

Notes: B^b1, F, C, B, A^b1, D, C^b1, D^b1, E, F, F^b1, G, G^b1, A

Slide Positions: 1, 2, 3, 4, 5, 6, 7

Diagram 2: Bass Trombone

Notes: B^b1, F, C, B, A^b1, D, C^b1, D^b1, E, F, F^b1, G, G^b1, A

Slide Positions: 1, 2, 3, 4, 5, 6, 7

Note: (This note is only playable on a 2 valve bass trombone)

Diagram 3: Tenor Trombone

Notes: B^b1, F, C, B, A^b1, D, C^b1, D^b1, E, F, F^b1, G, G^b1, A

Slide Positions: 1, 2, 3, 4, 5, 6, 7

Diagram 4: Bass Trombone

Notes: B^b1, F, C, B, A^b1, D, C^b1, D^b1, E, F, F^b1, G, G^b1, A

Slide Positions: 1, 2, 3, 4, 5, 6, 7

Diagram 5: Tenor Trombone

Notes: B^b1, F, C, B, A^b1, D, C^b1, D^b1, E, F, F^b1, G, G^b1, A

Slide Positions: 1, 2, 3, 4, 5, 6, 7

Diagram 6: Bass Trombone

Notes: B^b1, F, C, B, A^b1, D, C^b1, D^b1, E, F, F^b1, G, G^b1, A

Slide Positions: 1, 2, 3, 4, 5, 6, 7

Note: May need slightly shorter slide position.

